



# GPS Logs Download

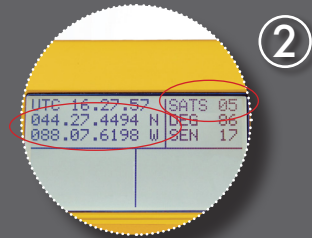
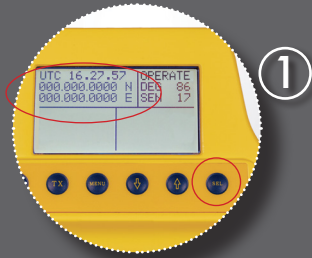
---

How to download GPS Logs from AML Pro

*\*Exclusively for Windows Operating Systems*

**AML Pro Series**

## RECORDING GPS COORDINATES WITH THE AML PRO



The AML Pro has a GPS tracking system that is active as soon as you turn ON your unit. It is only able to acquire public GPS satellites when you are using the All Materials Locator outdoors.

- ① Press the SEL button to activate the GPS display on the screen. At the beginning, it will show zeros in the location coordinates. When the unit locks at least 3 satellites it will show coordinates on the display.
- ② To acquire **accurate coordinates** you need to lock **at least 6 satellites**; the amount of satellites that you'll have access to depends on your location. The screen will show the number of satellites on the message status area for **3 seconds** and will also display your current coordinates on the screen.
- ③ Press the "SEL" button every time you want to record a GPS coordinate to the AML Pro's memory; if the message "NO LOCK" is displayed, you don't have enough satellites and must wait to acquire more satellites to continue the process.

Up to 300 logs can be recorded in the AML Pro's internal memory, the system will overwrite the oldest entry after that.

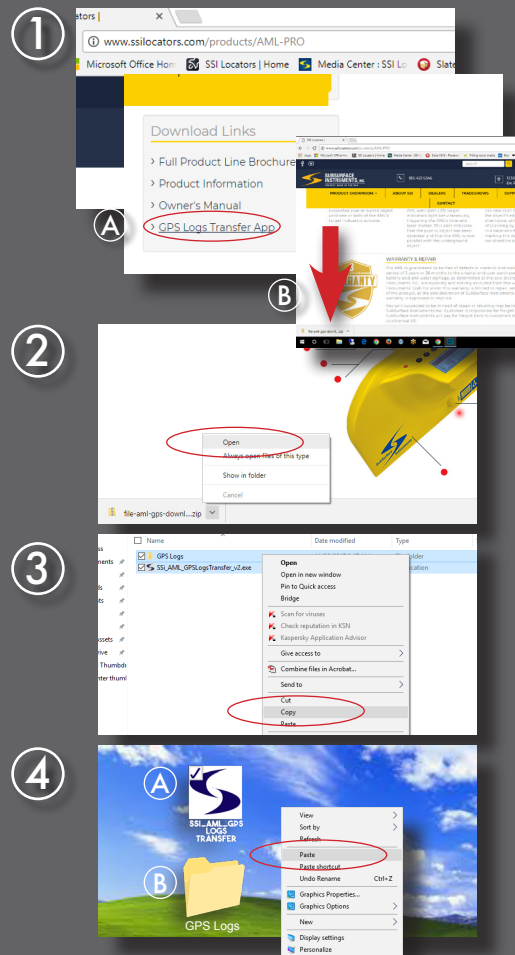
## INITIAL SETUP (WINDOWS COMPATIBLE)

- ① Download the GPS Logs Transfer App from our website [www.ssilocators.com/products/AML-PRO](http://www.ssilocators.com/products/AML-PRO).
  - Ⓐ Click on the GPS Logs Transfer App link under the Download Links section.
  - Ⓑ It will **automatically download** a compressed folder to your computer; choose a location and save it.

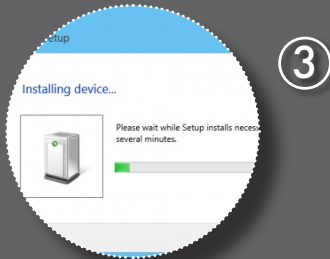
*(At SSI we ensure our applications are virus free and safe to install in your computer. You can safely accept the Windows security measures.)*

- ② Open the compressed folder "file\_aml\_gps\_download\_utility.zip". If you can't find it, it's usually in your downloads folder.
- ③ Select **both files** (App & folder) located inside of the folder and copy them.
  - Ⓐ SSI\_AML\_GPS\_LOGS\_TRANSFER (application's file)
  - Ⓑ GPS Logs Folder (destination's folder for your downloaded GPS coordinates)

**Note:** We suggest you place the application and destination folder on the desktop for easy access, but you can place them anywhere in your computer that is more convenient to you.



## CONNECTING YOUR AML PRO TO THE COMPUTER

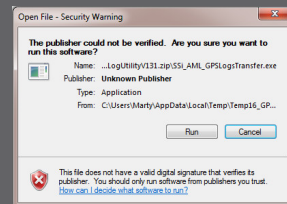


- ① After acquiring the GPS logs from your work-site, turn your AML Pro OFF before connecting it to the computer. Your computer **MUST be connected to Internet to complete this process.**
- ② Plug the provided USB cord into the unit. **DO NOT TURN THE AML Pro ON.** Plug the other end of the cord into a USB port in the computer. As soon as you plug into the USB port the computer will automatically start installing the drivers for the unit into your system (*Important: from the Internet*).
- ③ Your computer will prompt a successful installation message after it's done installing the drivers. - This is a Windows process and may vary depending on your computer's Operating System -
  - \* USB PWR status message will show on the LCD Display for **3 seconds**.
- ④ Turn the AML unit ON and start up messages will be displayed. Wait 3 seconds for the status to change to "OPERATE". You are now ready to start.

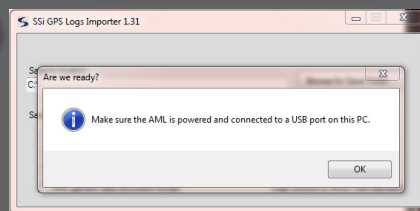
## RUNNING THE GPS LOGS TRANSFER APPLICATION

- ① Click on the GPS Logs Transfer Icon to run the application. Your system will prompt the security settings; the application is safe and you can run it with confidence.
- ② The program will ask if the AML is connected and turned ON. If the unit is ready to transfer with the status message on "OPERATE", click OK
- ③ The application will find the AML connected to your system and assign it a Comm Port number. This number will vary with each computer. Click OK to continue.
- ④ *If the AML was not found, you'll get notified with an error message on the screen. Close the app, disconnect the USB cable from the computer and re-start the process. Sometimes the USB port does not recognize the unit and a simple reset will correct the problem. Click OK to continue.*

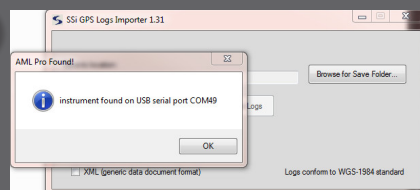
1



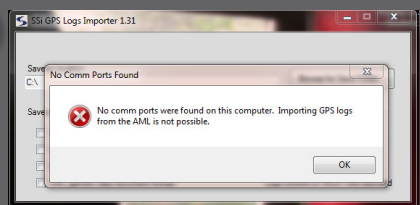
2



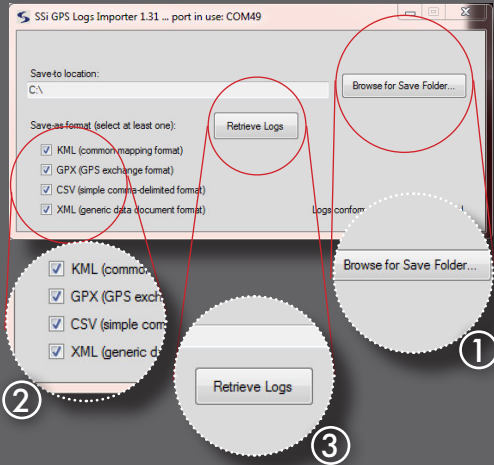
3



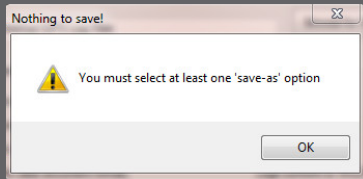
4



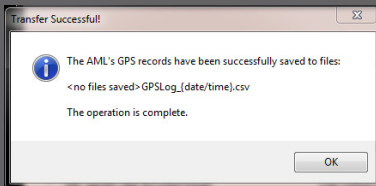
## DOWNLOADING GPS LOGS FILES



- 1 Select the "Browse for Save Folder" button, and search for the folder you previously created to store your GPS Logs, we suggested before to place it on your desktop.
- 2 The screen will show 4 file formats to download your data. Select at least one, by checking the box to the left of the file extension.  
  
Read the description on the screen to choose the file that fits your needs. You can select all four if you prefer.
- 3 Click on the "Retrieve Logs" button to start downloading.



- 4 *If by mistake you did not check any box, the application will display a message to remind you that you need to select at least one file extension.*



- 5 The process takes only a couple seconds and the application will display a message to let you know that the data transfer was successful.

## CLOSING THE GPS LOGS TRANSFER APPLICATION

- ① You can delete all the GPS Logs stored in the AML's memory. Choose "YES" or "NO" to clear the memory.

*Note: Go to your GPS Logs folder to confirm the data was successfully transferred before deleting any files from the unit.*

If you choose "NO" go to Step 3. The memory will recycle and if the memory is full, the oldest entry will be overwritten.

- ② If you choose "YES" a confirmation message will be displayed on the screen after the records have been deleted.

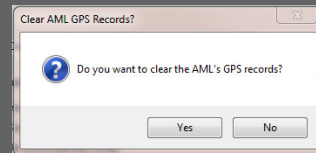
**Important:** This process **CANNOT** be undone! Once the Logs have been erased you won't be able to recover them.

- ③ To exit the application press the X on the top right corner of the software screen.

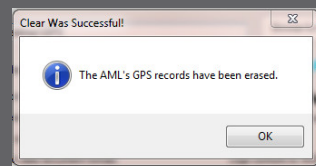
- ④ The app will reset the connection with the AML and save the changes; click ok to disconnect the unit.

After the software has been closed, you can safely unplug the AML Pro from the USB port.

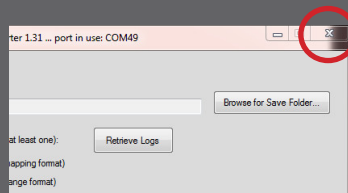
1



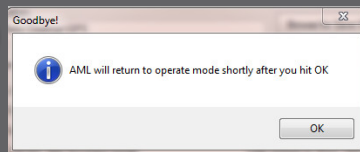
2



3



4





①

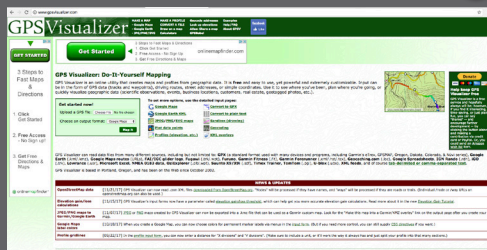
	Date modified	Type	Size
GPSLog_11-21-2016_103828.csv	11/21/2016 10:38 ...	Microsoft Excel C...	1 KB
GPSLog_11-21-2016_103828.gpx	11/21/2016 10:38 ...	GPX File	1 KB
GPSLog_11-21-2016_103828.kml	11/21/2016 10:38 ...	KML	1 KB
GPSLog_11-21-2016_103828.xml	11/21/2016 10:38 ...	XML Document	1 KB

① You can find the GPS Logs Files inside of the Folder you created at the beginning of the process

② Use the files as a source for your mapping software. An example would be GPS Visualizer:

[www.gpsvisualizer.com](http://www.gpsvisualizer.com)

②



For more information or  
if you have any questions, please contact us at:

**info@ssilocators.com - Toll free: (855) 422.6346**

or visit us at:

**www.ssilocators.com**