

# 6mm Pipe Inspection Camera System

**SUBSURFACE  
INSTRUMENTS, INC**

Premier developer, manufacturer and distributor of high frequency and magnetic locators, PVC pipe detectors, PE Pipe, metallic pipe, cable and custom specialty locators.



Control Box



Camera



Cable Wheel



Monitor



Battery



Charger



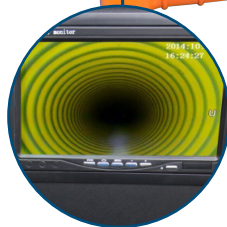
Keyboard



Skids



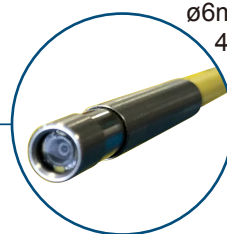
Suitcase



Video Display



Text recording



ø6mm Camera  
4pcs white LEDs  
Waterproof IP66  
60° view angle



9" monitor



New style control box  
Easier to operate  
Support flash Disk



Fiberglass Rod  
40m cable length  
ø5mm cable diameter  
Wheel: ø320x110(h) mm

Camera Head	
Camera Size:	ø6mm
Sensor size:	1/12 inch
View angle:	60°
Work current/power:	DC 3.3V
Camera light:	4PCS white LEDS
Resolution:	PAL: 720X576 NTSC: 720X480
Glass material:	Sapphire glass
Shell material:	stainless steel
Focus Distance:	20~70mm

Cable Wheel	
Cable size:	ø320mmX110(h)
Wire material:	Fiberglass rod
Wire length:	40m
Wire diameter:	ø5.0mm

Monitor	
Size:	9inch TFT
Total Pixels:	800X480
Work current/supply:	DC12V
OSD language:	English
Image reversible	
Model:	16:9 & 4:3
Sunshade	

Li-ion Battery	
Battery capacity:	4400 MAH
Work supply:	14W
Charge time:	5 Hours
Protective voltage:	9.3V
Work time:	≥420minutes

Suitcase	
Size:	L511XW430XH200mm
Material:	Engineering plastic

Control Box	
Power supply:	12V
Work current:	150MA
Storage medium:	SD card(max 256G) USB Stick
Battery level display	
Picture snap & movie record	.jpg .mp4
DVR Total Pixels:	720X576 (D1)
Movie format:	MP4
Microphone Audio record	
Stereo earphone output	

Charger	
Input:	AC100-240V~50/60Hz
Output:	DC 12.6V/1000MA
DC plug diameter:	2.1mm

Skid	
Skid	ø 12mm



**SubSurface Instruments, Inc.** | 1230 Flightway Drive, De Pere, WI. 54115  
toll free: 855.422.6346 | Website: [www.ssilocators.com](http://www.ssilocators.com) | email: [info@ssilocators.com](mailto:info@ssilocators.com)

Updated 07/26/2018

